

EYEGLAMOUR

SLEEK, CHIC AND SPEC-TACULAR

IT'S ALL ABOUT THE EYES

KEEP IT FRESH, KEEP IT IN FRAME



QUITE A SPECTACLE





Fashion-forward frames to complement your features and personality, only at Focus Point.

BVLGARI SP22301201452

PUBLISHER
DATO' CL LIAW

MARKETING MANAGER
JOEY CHUN

SENIOR MARKETING EXECUTIVE
CHIA CHIAN HUI

EDITORIAL & CREATIVE CONSULTANT
JOANNE LIM

WRITER
KATHLYN D'SOUZA FOR BLUEPRINT STUDIO

GRAPHIC DESIGNER
SHOKELUI FOR BLUEPRINT STUDIO

PHOTOGRAPHER
SHAWN LOR

MAKEUP & HAIR
DEIDRE CHONG

PUBLISHED BY
FOCUS POINT VISION
CARE GROUP SDN BHD
(199301013733)
Unit 1, 3, 5 & 7,
Jalan PJU 1/37, Dataran Prima,
47301 Petaling Jaya,
Selangor DE

Printer
UNITED MISSION PRESS
SDN BHD
15, Jalan BS 9/10
Perindustrian,
Jalan BS 9, Taman Bukit Serdang, 43300 Seri Kembangan, Selangor DE



L-R:
VERSACE SP223411002353
KOALI KOA20057K1RR10

SPECS **APPEAL**

Stay trendy and stand out among
the crowd with stunning eyewear

FASHION MEETS VISION

Choose from a wide
range of classic, chic
and contemporary
eyewear to suit your
fancy

CHANEL SP5339HA1C501S655





L-R:
VALENTINO SP2042130044L55
VERSACE SP3242A1148544

FOR YOUR EYES ONLY

Pieces that perfectly complement
your face shape and eyes



STAY IN FOCUS

Let the windows to
your soul steal all
the attention and
do all the talking

CHANEL SP3417A1C62251



L-R:
GUCCI GG08830A1002
BVLGARI SP6160120148G58

EYE-CATCHING ACCESSORIES

Make a fashion statement with up-to-the-minute
sunglasses and spectacles

SHADE INTO STYLE

Brighten up any ensemble and add a pop of edginess to your sartorial routine with unique sunglasses that will instantly elevate your look

BVLGARI SP6149B120148G56





L-R:
DIOR FEMME MDSIGNAS1U110A0
CHANEL P42621C101EG59

A STUNNING SIGHT

Be the star of the show with fashionable frames that effortlessly draw attention



NO GLASSING OVER

Stand out among
the crowd and stay
memorable with elegant
eyewear

VALENTINO *TSP4057A151391354*

THE SPECTACLE SPECTRUM

Timeless eyewear styles that will never go out of style



PRADA LINEA ROSSA *PSASPVS04IV1CZH10155*



① HUGO BOSS HUG1288F1GUA ② JAGUAR JAG3725714818 ③ OLIVER PEOPLE OLISP1275T1525447
④ MONT BLANC MOTMB0177SK1005



① GIORGIO ARMANI GIRSP5103J1300653 ② CARTIER CATCT0227S1001
③ PRADA LINEA ROSSA PSASPSS08VS1DG008F59 ④ PORSCHE DESIGN POR083971A

IN DIFFERENT FRAMES

Designs that will see you through various outfits,
occasions and moments



GUCCI GUCGG0389S1007

TAKE A GOOD LOOK

Discover eyewear that would suit your
preference and personality



RAY BAN RAYSP2140F190152



① JAGUAR JAG3750016500 ② GUCCI GUCGG05300N1004
③ DIOR HOMME DHMBLACKSUITOAI12000 ④ CARTIER CATCT0278SA1001

STAY IN FRAME



CLOCKWISE FROM LEFT: BVLGARI BVLSP4193F150155, RM1509; VALENTINO VLTSP10181300355, RM1069; BVLGARI BVLSP4155BF150454, RM1619; PRADA PRASPVR07WF107N10154, RM1029; PRADA PRASPVR17WF107R10154, RM1029; CHANEL CNLSP3423A1C50153, RM1549.

SEE BETTER, LOOK PERFECT

CLOCKWISE FROM LEFT: DIOR HOMME DHMBLKSUITOS2U1B500, RM2352; HUGO BOSS HUG010431003, RM970; MONT BLANC MONTMB004801002, RM2273; HUGO BOSS HUG1288F1XCB, RM820; MONT BLANC MOTMB020701003, RM1613; DIOR HOMME DHMNEODIORORU11300, RM3161.



DOMINANT EYE?

This article sheds light on ocular dominance, which is the tendency to prefer visual input from one eye to the other



Yes, just like our hands, our eyes also have a dominant side. Our dominant eye is the eye that we prefer to use more. It is not always about one having better vision than the other.

At the same time, the dominant eye is also the eye that provides more input to the brain and transmits information more accurately, such as the location of an object.

Our dominant eye is typically on the same side as our dominant hand. Right-handers might have a dominant right eye while it's the left eye that would play the dominant role for left-handers. However, not all cases are the same as some might have the opposite eye that works as the dominant one.

Eye dominance plays a role in vision correction. It helps the ophthalmologist or optometrist to make clinical decisions when treating certain vision problems such as amblyopia (which is known as lazy eye), strabismus or crossed eyes.

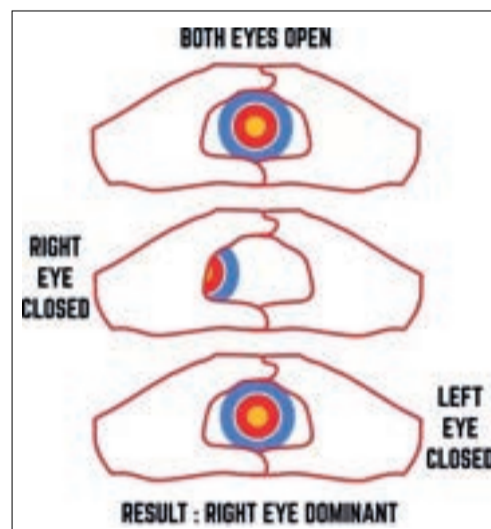
It's also an important consideration when treating people who require different types of correction in each eye – such as glasses or contact lenses that correct distance vision in one eye and near vision in the other, for example. Eye dominance also plays an important role in planning cataracts and other forms of vision surgery.

Furthermore, it is important for certain hobbies or sports that required accurate aim, with some of the more common ones being target shooting, baseball, golf, archery, and photography.

In golf, turning your head to use your dominant eye is key in the proper alignment of every stroke, including putts, drives and fairway shots.

In badminton, you need to turn your head enough to allow your dominant eye to clearly see the approaching shuttlecock's position, rotation and speed when before accurately batting it.

Below is one of the methods that one can use to determine the dominant eye.



Source: <https://targetcrazy.com/archery/resources/eye-dominance/>



BRANDON NG BOON PING
Optometrist
B. OPTOM (Hons) MSU
Focus Point IOI MALL PUCHONG



BEAT CONTACT LENS DRYNESS SO YOU DON'T MISS A MOMENT.

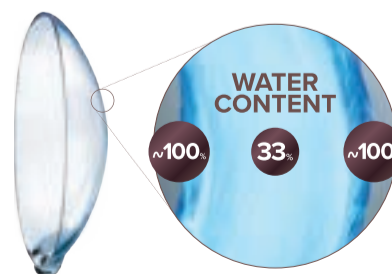


GB31647275217
Registered Under Act 737

GB41088126617
Registered Under Act 737

THE LENS THAT FEELS LIKE NOTHING¹

The silky smooth surface of DAILIES TOTAL1® Water Lens, holds almost 100% water content at the surface². This means all that touches your eyes is a gentle cushion of moisture so you #DontMissAMoment.



WATER LENS
Dryness-Reducing Effect*^{1,3}

Eye exam may be required. Professional fees may apply. Ask your eye care professional for complete wear, care, and safety information. *Contact lens related dryness.
References: 1. Perez-Gomez I, Giles T. European survey of contact lens wearers and eye care professionals on satisfaction with a new water gradient daily disposable contact lens. Clinical Optometry. 2014;6:17-23. 2. Angelini T, Nixon R, Dunn A, et al. Viscoelasticity and mesh-size at the surface of hydrogels characterized with microrheology. Invest Ophthalmol Vis Sci. 2013; 54: E-Abstract 500. 3. Thekveli S, Qui Y, Kapoor Y, et al. Structure-property relationship of delectilcon A lenses. Cont Lens Anterior Eye. 2012;35(Supp 1):e14. MY-DT1-2100021

Alcon

MDAMD 0071/2022



DAILIES TOTAL1®

Water Gradient Contact Lenses let you enjoy exceptional comfort.

9 OUT OF 10 patients agreed that DAILIES TOTAL1® contact lenses are so comfortable they **DON'T FEEL LIKE ANYTHING¹***



Follow these simple steps

HOW TO PREPARE



✓ **WASH** and thoroughly **DRY** your hands with a clean, lint-free towel.



1 SHAKE the pack gently before opening, and peel back the foil lid.



2 SLIDE the contact lens from the container using the tip of your index or middle finger.



3 DO NOT pinch the contact lens or use tweezers or other sharp objects to remove it; this could damage or ruin the contact lens.

HOW TO REMOVE



✓ **WASH** and thoroughly **DRY** your hands to start with **DRY, CLEAN** fingertips.



1 DAILIES TOTAL1® contact lenses maintain lubricity all day so use of rewetting drops is not recommended.

HOW TO APPLY



LOOK closely at the edge of the contact lens. If perfectly round, it's ready to apply. If flared, **FLIP** the contact lens over.



1 PULL the lower eyelid downward and the upper eyelid upward.



2 LOOK directly at the contact lens, and PLACE the contact lens onto the center of your eye.



3 Let go of your eyelid and BLINK. Simply REPEAT on the other eye, and you're ready to go.



2 Looking up, use your index finger to SLIDE the contact lens onto the lower part of your eye.



3 Gently PINCH the contact lens between your thumb and index finger and REMOVE it. REPEAT on the other eye, and you're done!

It's so easy! Start enjoying the contact lenses that feel like nothing at all

Alcon



THE LENS THAT FEELS LIKE NOTHING¹

The silky smooth surface of DAILIES TOTAL1® Water Lens, holds almost 100% water content at the surface². This means all that touches your eyes is a gentle cushion of moisture so you #DontMissAMoment.

Eye exam may be required. Professional fees may apply. Ask your eye care professional for complete wear, care, and safety information. *Contact lens related dryness.

References: 1. Perez-Gomez I, Giles T. European survey of contact lens wearers and eye care professionals on satisfaction with a new water gradient daily disposable contact lens. Clinical Optometry. 2014;6:17-23.
2. Angelini T, Nixon R, Dunn A, et al. Viscoelasticity and mesh-size at the surface of hydrogels characterized with microrheology. Invest Ophthalmol Vis Sci. 2013; 54: E-Abstract 500.
3. Thekveli S, Qui Y, Kapoor Y, et al. Structure-property relationship of delecticon A lenses. Cont Lens Anterior Eye. 2012;35(Suppl 1):e14.
MY-DT1-2100035

MDAMD 0071/2022

GO BEYOND COMFORT¹⁻³

Moisture
Breathability
Protection
Weightlessness



What is it about life that makes it so enjoyable? It's a fast-paced ride filled with moments of inspiration and achievements. Why not make it even better? Discover a new level of comfort for 16 hours today.⁴

- **Advanced MoistureSeal®** retains 96% lens moisture for long-lasting wear.⁵
- **ComfortFeel** enriches lenses with a solution containing ingredients that are released for all-day comfort.^{1,6}
- High oxygen breathability.³
- Effective UV protection.^{3*}
- Weightless soft.¹



Live the ULTRA Life.

BAUSCH + LOMB

References:
1. Data on file (2019) All Topline Tables Combined 25 OCT (v01) 2. Data on file (2020) MoistureSeal™ Support memo for Kalitikon A document, 24 July 3. Data on file (2020) Development of an Innovative Contact Lens Product that Promotes Ocular Homeostasis, 30th Apr. 4. Data on file (2020), 16 hours clinical evaluation of Kalitikon A compared to other SiHy daily lens dehydration report, 17 Jan. 5. Data on file (2020) R&D Clinical Report, ROC249-009, 17th Jan. 6. Data on file (2020), Uptake of Packaging Solution Components Claims Memo, 29 April.
Registered under Act 737, GB9970920-50833, MDAMD 0091/2022.

U00009M21

A Beautiful Natural Look
From a
TRUSTED BRAND



EyeMeditech
● ● ● ● ●

FOCUS POINT

OPTICAL PROTECTION *Plan*

**NOW YOUR NEW
OPTICAL GLASSES
ARE WELL PROTECTED.**

**FIRST EVER
IN MALAYSIA.**

Exclusively in
FOCUS POINT



Insured by AIA General Berhad

WHAT'S COVERED



Accidental Damage*

*Valid for the first year from the date received.



Extended Warranty*

*Valid for the subsequent year after the original warranty expires.

Exclusion:

- ✗ *Sunglasses*
- ✗ *Contact Lenses*
- ✗ *Safety Goggles*
- ✗ *Swimming Goggles*



Scan here
for more info

*T&Cs apply

Speak to our personnel for more information.

FOCUS POINT

EXPERIENCE THE

NEW ECEES

comfort

AVAILABLE IN
DAILY & MONTHLY



ECEES COMFORT DAILY

DIAMETER

14.0mm

BASE CURVE

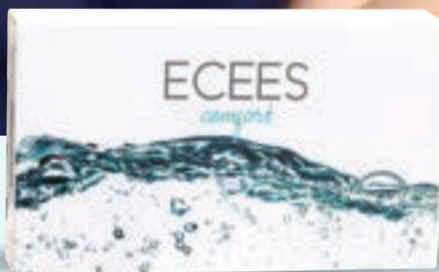
8.6mm

WATER CONTENT

56%

30 PCS

BOX



ECEES COMFORT MONTHLY

DIAMETER

14.2mm

BASE CURVE

8.6mm

WATER CONTENT

62%

3 PCS

BOX

#1

LENS BRAND
RECOMMENDED BY EYE CARE
PROFESSIONALS WORLDWIDE*

TRANSPARENCY THAT STANDS THE TEST OF LIFE

CRIZAL® SAPPHIRE™ HR: an invisible shield for your eyes and your lenses. A promise of transparency, durability, ease of care and UV protection.

SEE MORE. DO MORE.



essilor

Crizal®

©ESSILOR INTERNATIONAL - May 2021 - ESSILOR®, CRIZAL® AND CRIZAL® SAPPHIRE™ ARE TRADEMARKS OF ESSILOR INTERNATIONAL. Frames: Persol 3185-V.
*Essilor, #1 LENS BRAND RECOMMENDED BY EYE CARE PROFESSIONALS WORLDWIDE - Quantitative research conducted among a representative sample of 958 independent ECPs by CSA in February 2019 - France, UK, Germany, Italy, Spain, US, Canada, Brazil, China, India.

Everyday protection with HOYA's



Improved protection and greater visual
comfort with HOYA's Full Control



**2-YEAR
WARRANTY[#]**



- Durable
- Scratch resistant
- Dust, oil and water repellent
- Anti-reflection



Front and back UV protection



Reduces bacterial growth on your lenses
by at least 99.9%* and certified for its
quality and effectiveness**



Extra comfort in a digital world

HOYA
FOR THE VISIONARIES

* Based on BOKEN quality evaluation institute's anti-bacterial activity value test results (Staphylococcus aureus and E.Coli)

** Tested according to ISO 22196 and certified by The Society of International Sustaining Growth for Antimicrobial Articles (SIAA) standards

*2-year warranty is only applicable for coating-related issues due to manufacturing defect.

Full Control consists of the following Hoya coating products: Hi-Vision LongLife, BlueControl, UV Control and Bacterial Control.

Styled In
COLORS

MODEL IS WEARING
 Brilliant Brown

AVAILABLE IN DIFFERENT ATTRACTIVE SHADES

MOONDUST Series



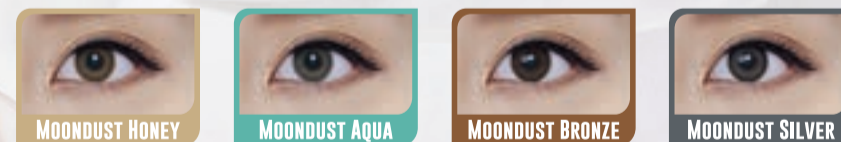
1-MONTH Disposable



1-MONTH and 1-DAY Disposable



1-DAY Disposable



1-MONTH Disposable



What is blue light?

Blue light is the high energy part of the light ranging from about 380 nm in the blue-violet range to 500 nm (blue-turquoise). Today's light sources and digital devices emit a disproportionately high amount of blue light and may contribute to discomfort glare and therefore could play a role in the perception of digital eyestrain.

What is digital eye strain?

- Digital eye strain (DES) is the combination of eye and vision problems associated with the use of computers and other electronic displays.
- DES causes visual disturbance and / or visual discomfort.
- Most frequently named symptoms include glare / dazzle, uncomfortable vision, accommodation stress and dysfunction, fixation disparity, pain in or around the eyes, dryness and eye fatigue.

Sources of blue light



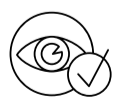
380nm 400nm *455nm 500nm 780nm

Blue Light

Face the new normal

ZEISS BlueGuard Lenses

Your Benefits.



Easy on the eyes:
Designed to address digital eye strain in an increasingly digital world.



More Protection:
Blocks potentially harmful blue light¹ and offers full UV protection.



Less reflection:
Looks good on- and offline, with up to 50% less annoying reflections of digital blue light for excellent clarity.



Scan here for more info!

¹ Blocks up to 40% of blue light in the range of 400–455nm.



BOSS